



Adjustable Pressure Sensor Simulator CSG420

Function Description:

The **Condor-CSG420** serves as sensor simulator. The device can be connected to a 4...20 mA interface instead of a sensor. This may be required, e.g. to control functions or for repairs. The current can be variably set between 3.5 mA and 25.5 mA. Furthermore, the **Condor-CSG420** is also able to display the terminal voltage.

Simulating a Sensor

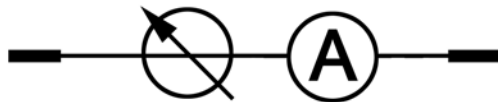
In order to simulate a sensor, connect the wires of the **Condor-CSG420** (+ = brown /- = blue) to a 4-20 mA input. Using the knob, any current between 3.5 and 25.5 mA can be adjusted. As of approx. 2.5 mA the display is automatically activated.

Current Measurement:

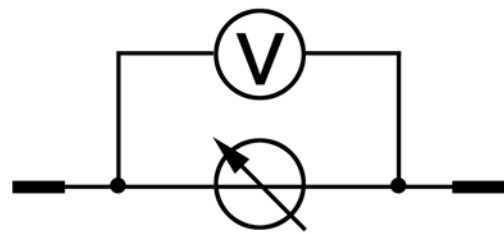
In order to measure the current, set the selector switch to I (current measurement - mA) and read the value from the display.

Measuring the terminal voltage:

In order to measure the terminal voltage, set the selector switch to II (terminal voltage - V) and read the value from the display.



Current Measurement



Measuring the terminal voltage

Technical Data CSG420

Technical operating data	
Adjustable current range	3.5 mA up to 25.5 mA
Terminal voltage measuring range	8.5 V up to 32 V
Display accuracy	2 % end value ± 1 Digit

Technical operating data	
Leads	80 cm
Clearance and creepage distances	acc. to VDE 0110
Power supply	Battery 9V
Included in the scope of supply	Block IEC 6 F22



Condor Pressure Control GmbH

Warendorfer Straße 47 – 51
D-59320 Ennigerloh

Telefon: +49 (0) 25 87 / 89 – 0
Telefax: +49 (0) 25 87 / 89 - 140

info@condor-cpc.com
www.condor-cpc.com